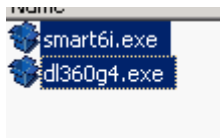


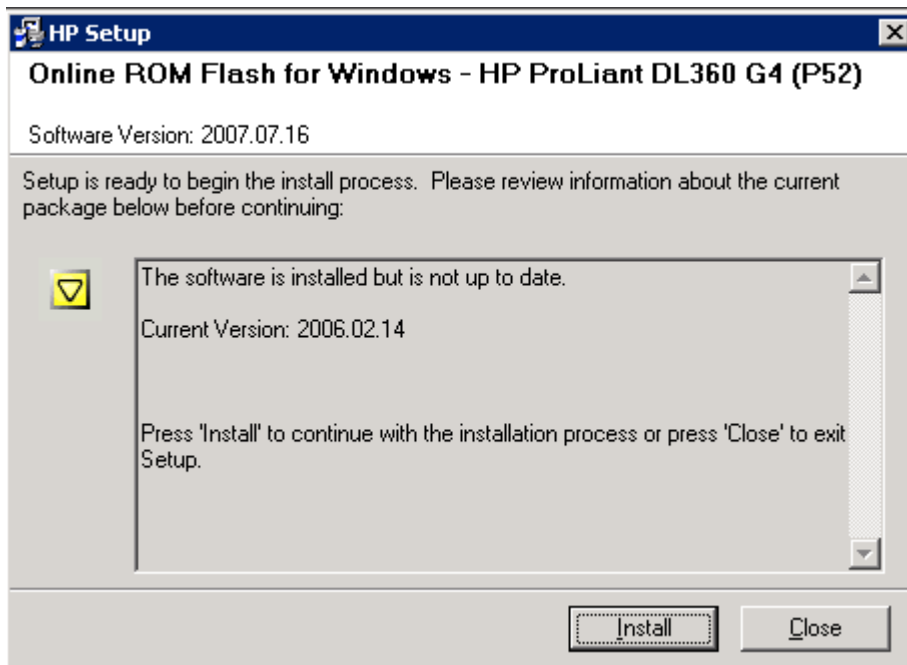
Copy firmware locally to the server, in the case below, I have named each file so I know what firmware is being upgraded.



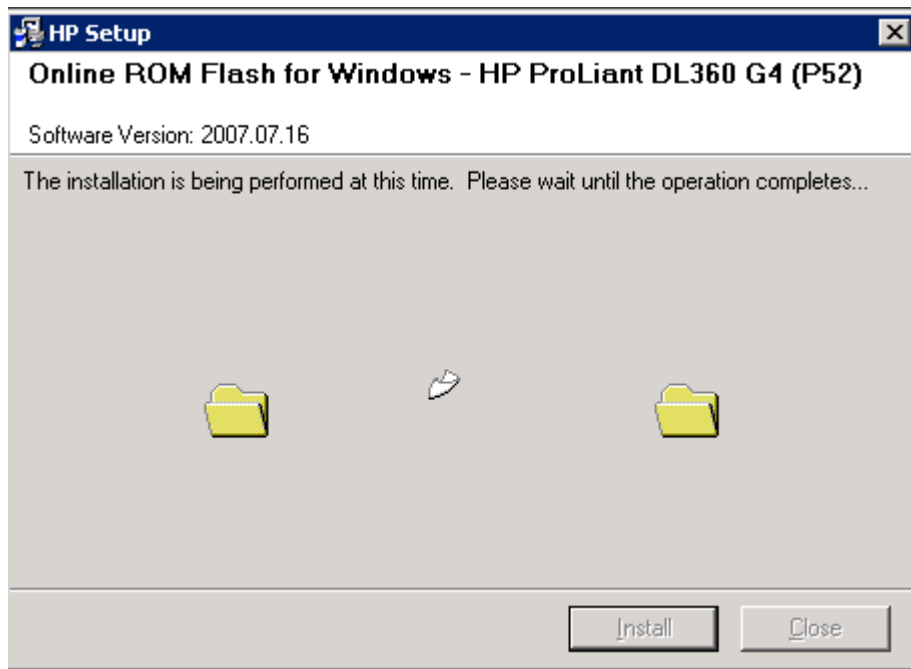
Double click the file (accepting any Microsoft security messages)



Click install – this scans your server to check if the firmware applies and what version you will update to:



It now confirms the information, nothing happens until you click install, so you can halt the upgrade by clicking close. So we're updating from 14th February 2006 to 16th July 2007.



The update applies and this window displays, don't worry if it says not responding for a minute or two whilst it applies the update.



The update is now complete and will apply on reboot. At this point you can either apply another firmware update(s) or reboot.