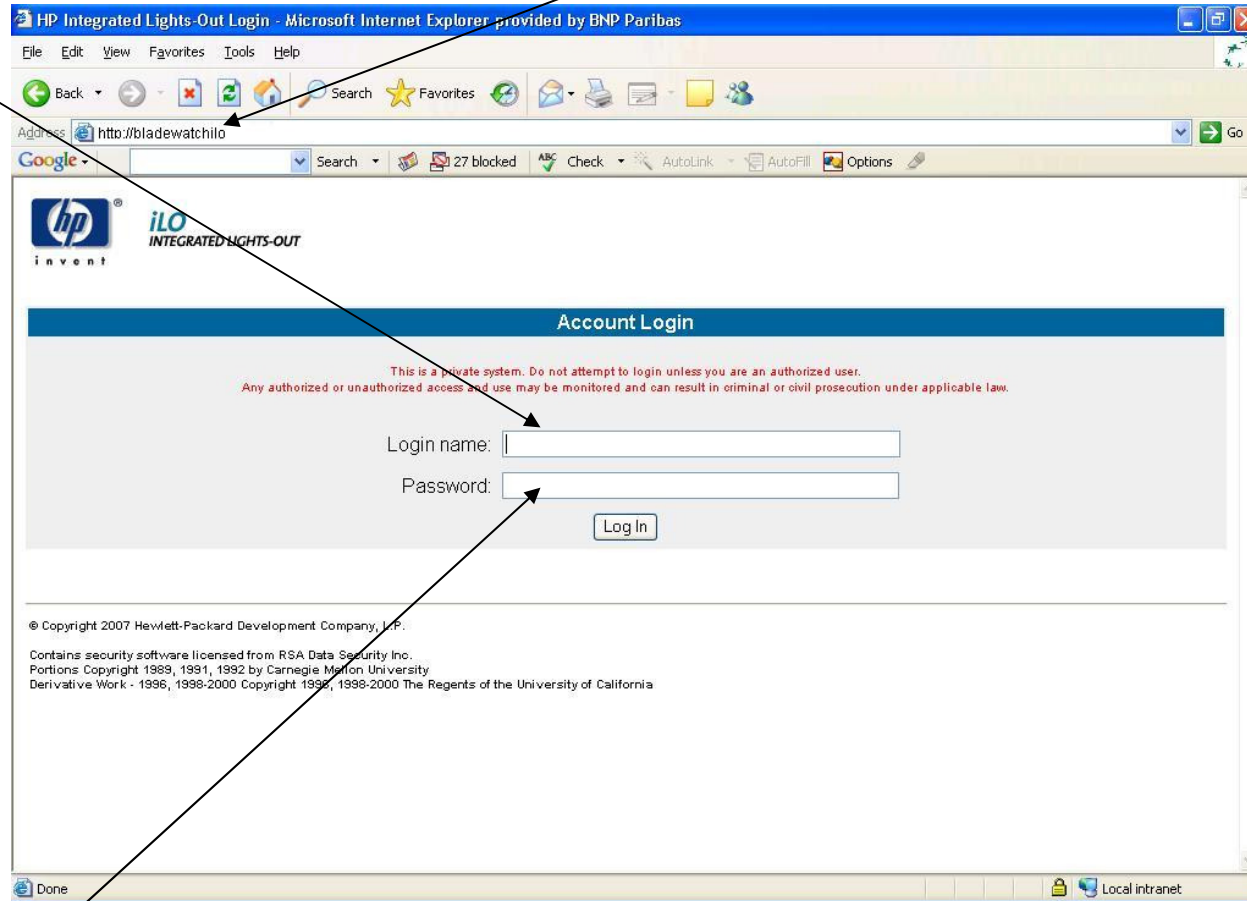


Type in the username (either the default one or your specific ones)

The dns name or ip address of the ilo – you specify – 10.1.177.12



Type in the password (either the default one or your specific ones)

Selecting the first tab 'system' status provides the following options: (It also displays a summary status of the ILO and server)

Status summary provides the system/ilo status like power status, firmware and ilo ip address

ILO status provides information about the ILO

Server status will provide some information similar to the survey information

ILO event log contains all the ilo events, when the user has logged in, when the ilo has been reset or a difference in the power state

IML contains the IML log for the server, any hardware failures or POST errors during configuration, can be cleared using this screen

Server and ilo diagnostics for system administration

HP Integrated Lights-Out - Microsoft Internet Explorer provided by BNP Paribas

File Edit View Favorites Tools Help

Back Forward Stop Refresh Home Search Favorites

Address <http://10.102.146.82:443/ilo/summary> Go

Google 27 blocked ABC Check AutoLink AutoFill Options

Server Name: Bladewatch
iLO Name: Bladewatch
Current User: Administrator

System Status Remote Console Virtual Devices Administration

Insight Agent | Log out

Status Summary

Summary Information

Active Sessions: iLO User:
Server Name: Bladewatch
Server Power Status: ON
iLO IP Address: 10.1.177.12
iLO Name: Bladewatch
Latest iLO Event Log Entry: Browser login: Administrator - 10.102.146.82
Latest Integrated Management Log Entry: System Power Supplies Not Redundant
iLO Firmware Version: 1.91
05/04/2007
iLO self-test: Passed
Key Generation: Underway; remote console performance may be temporarily diminished.

Done Local intranet

Selecting the second tab 'system' status provides the following options:

- Remote console information – the help guide summary if you like
- Remote console – the screen used to manage the screen – using the mouse/keyboard
- Remote console dual cursor – provides the dual cursor function for system administration
- Remote console hot keys – allows you to specify control keys for system administration
- Computer lock settings

HP Integrated Lights-Out - Microsoft Internet Explorer provided by BNP Paribas

File Edit View Favorites Tools Help

Back Forward Stop Home Search Favorites AutoLink AutoFill Options

Remote Console Information
Remote Console
Remote Console (dual cursor)

Remote Console Hot Keys
Computer Lock Settings

Bladewatch
iLO Name: Bladewatch
Current User: Administrator

hp iLO INTEGRATED LIGHTS-OUT

System Status Remote Console Virtual Devices Administration

Insight Agent | Log out

Status Summary

Summary Information

Active Sessions:	iLO User:
Server Name:	Bladewatch
Server Power Status:	ON
iLO IP Address:	10.1.177.12
iLO Name:	Bladewatch
Latest iLO Event Log Entry:	Browser login: Administrator - 10.102.146.82
Latest Integrated Management Log Entry:	System Power Supplies Not Redundant
iLO Firmware Version:	1.91 05/04/2007
iLO self-test:	Passed
Key Generation:	Underway; remote console performance may be temporarily diminished.

Done Local intranet

Selecting the third tab 'system' status provides the functions you need to power cycle the server, load virtual media etc:
Virtual power including power reset, power cycle, and power off etc
Virtual media allows you to load a floppy disk, a cdrom from your desktop as well as virtual iso images

The screenshot shows the HP iLO Integrated Lights-Out web interface in Microsoft Internet Explorer. The browser title is "HP Integrated Lights-Out - Microsoft Internet Explorer provided by BNP Paribas". The address bar shows the URL "https://bladewatchilo/ie_ind". A search bar is visible with the text "Virtual Power", "Power Regulator", "Virtual Media", "Virtual Indicators", "Virtual Serial Port", "Virtual Serial Port", and "Configuration".

The interface has a navigation bar with tabs: "System Status", "Remote Console", "Virtual Devices", and "Administration". The "System Status" tab is selected. On the right side of the navigation bar, there is a "Log out" link and the text "Insight Agent | Log out".

The main content area is titled "Status Summary" and contains a "Summary Information" section. The information displayed is as follows:

Active Sessions:	iLO User:
Server Name:	Bladewatch
Server Power Status:	ON
iLO IP Address:	10.1.177.12
iLO Name:	Bladewatch
Latest iLO Event Log Entry:	Browser login: Administrator - 10.102.146.82
Latest Integrated Management Log Entry:	System Power Supplies Not Redundant
iLO Firmware Version:	1.91
	05/04/2007
iLO self-test:	Passed
Key Generation:	Underway; remote console performance may be temporarily diminished.

The browser status bar at the bottom shows "Done" and "Local intranet".

Selecting the fourth tab 'system' status provides the following options:

User administration – allows you to create/modify users

Network settings – allows you to set the network settings/dhcp or static ip address to access iLO remotely

Upgrade ilo firmware – allows you to manage the ilo firmware

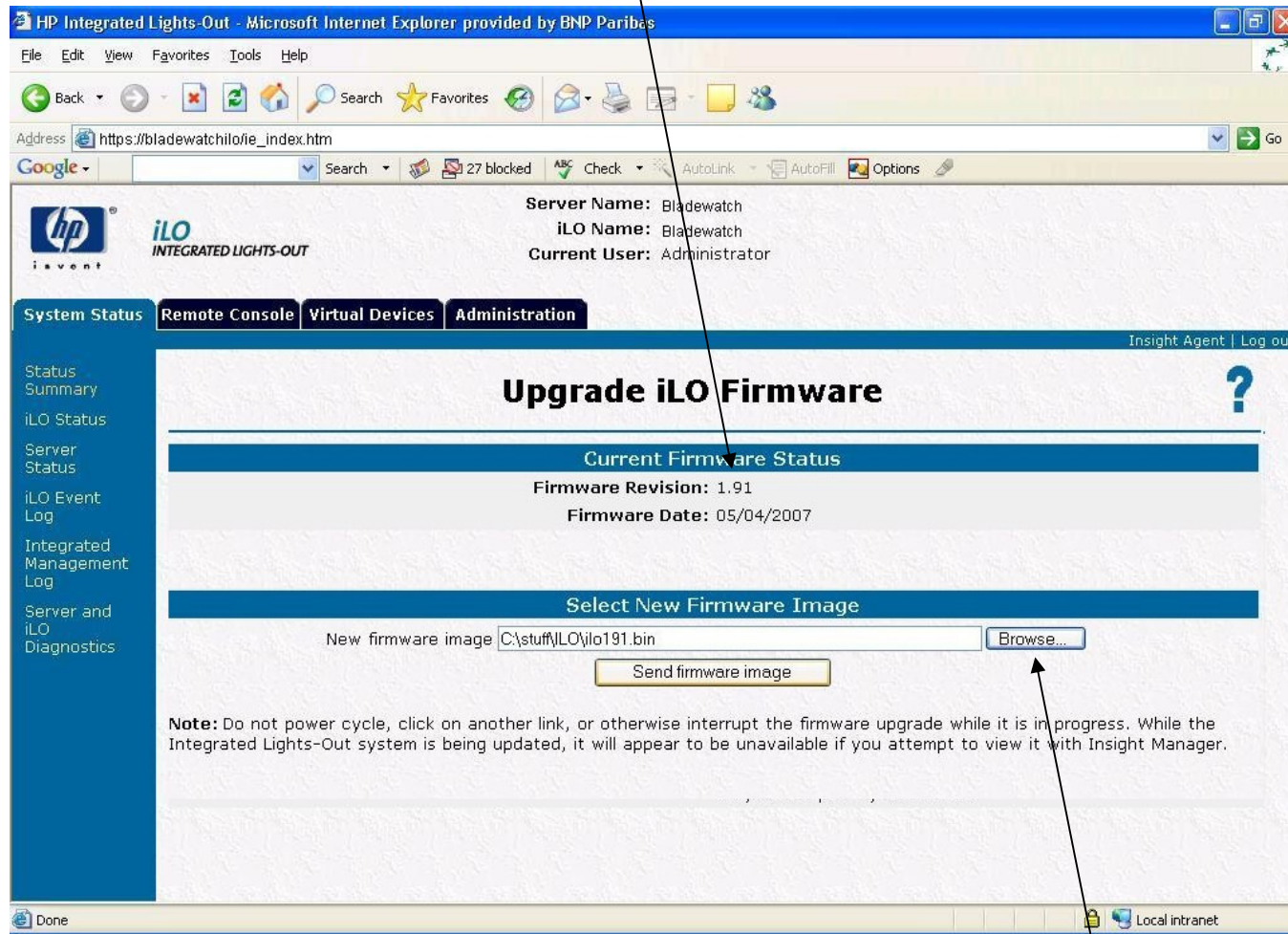
The screenshot shows the HP iLO Integrated Lights-Out web interface in Microsoft Internet Explorer. The browser window title is "HP Integrated Lights-Out - Microsoft Internet Explorer provided by BNP Paribas". The address bar shows "https://bladewatchilo/ie_index.htm". The page features a navigation menu with tabs: "System Status", "Remote Console", "Virtual Devices", and "Administration". The "Administration" tab is selected, and a dropdown menu is open, listing options: "User Administration", "Global Settings", "Network Settings", "SNMP/Insight Manager Settings", "Directory Settings", "Upgrade iLO Firmware", "Licensing", "Certificate Administration", "SSH Key Authorization", and "Two-Factor Authentication".

The main content area displays the "Status Summary" page. The left sidebar contains a navigation menu with the following items: "Status Summary", "iLO Status", "Server Status", "iLO Event Log", "Integrated Management Log", "Server and iLO Diagnostics". The "Status Summary" page has a blue header with the text "Status Summary" and a question mark icon. Below the header is a section titled "Summary Information" containing the following data:

Active Sessions:	iLO User:
Server Name:	Bladewatch
Server Power Status:	ON
iLO IP Address:	10.1.177.12
iLO Name:	Bladewatch
Latest iLO Event Log Entry:	Browser login: Administrator - 10.102.146.82
Latest Integrated Management Log Entry:	System Power Supplies Not Redundant
iLO Firmware Version:	1.91
iLO self-test:	05/04/2007 Passed
Key Generation:	Underway; remote console performance may be temporarily diminished.

The browser status bar at the bottom shows "Done" and "Local intranet".

Shows the current firmware version installed – the current latest version 1.91B (for specific Proliant models)



Send the firmware image applies firmware and 'restarts' the ilo independently of the operating system

Select the path and image (firmware file *.bin) to upgrade firmware)