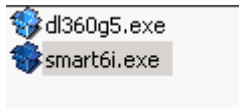
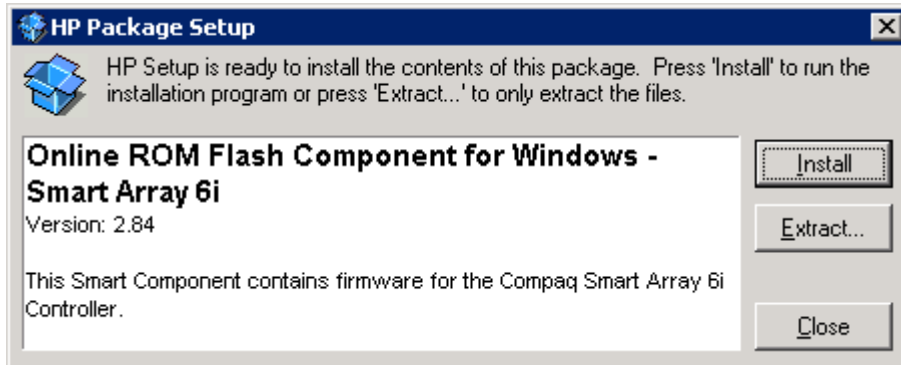


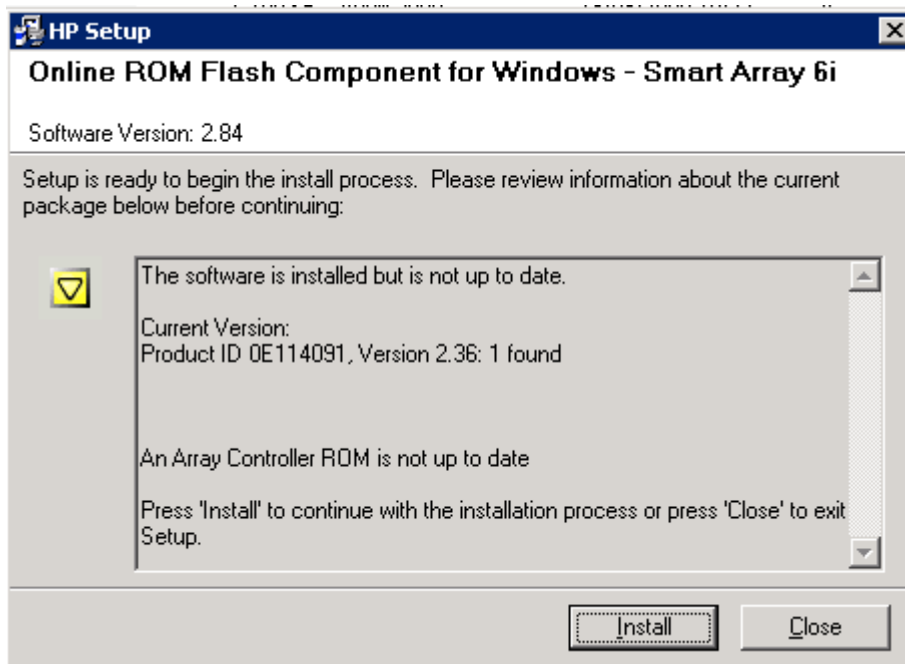
Copy firmware locally to the server, in the case below, I have named each file so I know what firmware is being upgraded.



Double click the file (accepting any Microsoft security messages)

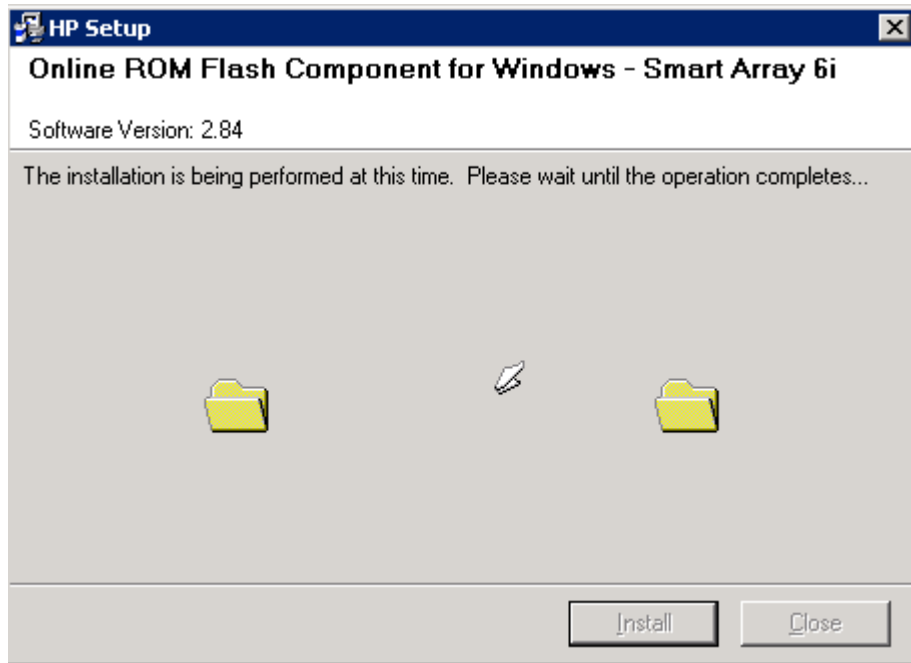


Click install – this scans your server to check if the firmware applies and what version you will update to:

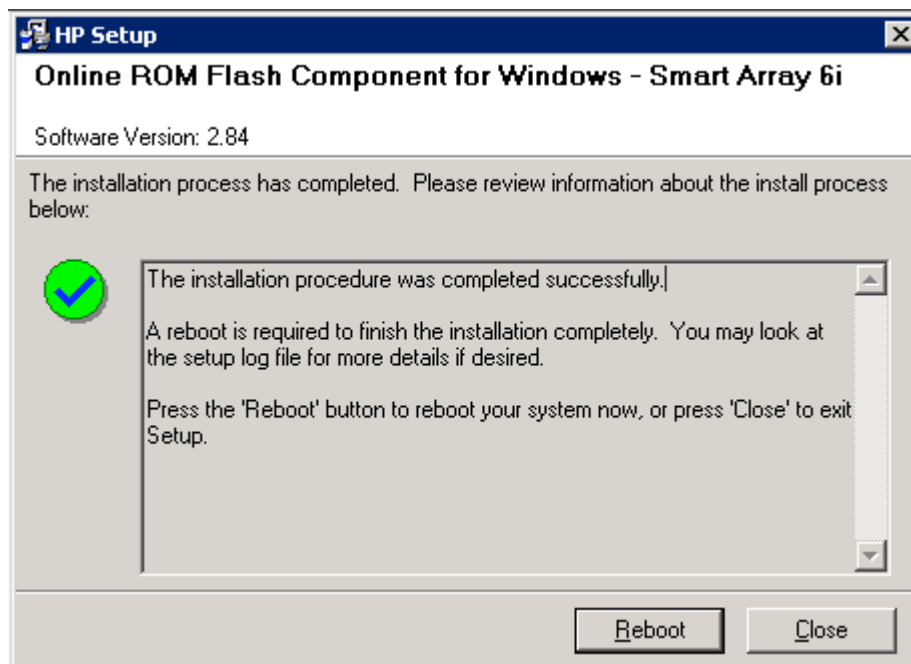


It now confirms the information, nothing happens until you click install, so you can halt the upgrade by clicking close.

In this case it's updating from 2.36 to 2.84.



The update applies and this window displays, don't worry if it says not responding for a minute or two whilst it applies the update.



The update is now complete and will apply on reboot. At this point you can either apply another firmware update(s) or reboot.

On reboot in the event log you may see the entry event ID 271 Service PlugPlayManager in the system event logs:

The Plug and Play operation cannot be completed because a device driver is preventing the device from stopping. The name of the device driver is listed as the vetoing service name below.

You don't have to reboot the server. (The server will still work), but I tend to just in case.